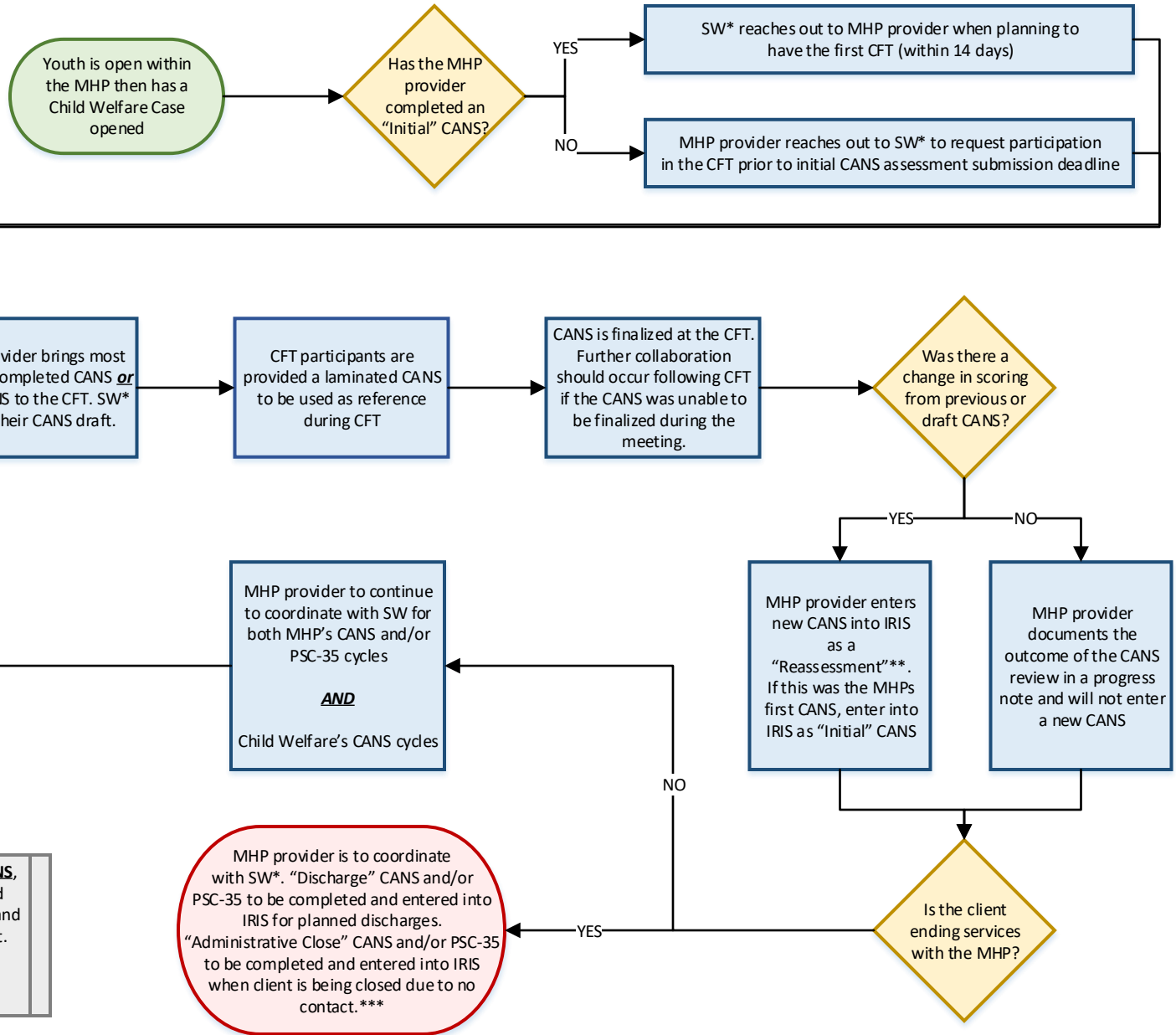


# CANS Dependency Workflow – Open with MHP First

Youth is open within the Mental Health Plan *then* has a Child Welfare Case opened

**BEFORE ENTERING A CANS OR PSC-35 INTO IRIS, PLEASE CHECK THE CHART. IF THERE ARE QUESTIONS OR CONCERNS PLEASE CONTACT AQIS.**



**\*\*Reassessment timelines will always follow the Initial CANS**, regardless of when the "Reassessment CANS" is completed during the CFT. Reassessments are completed between five and seven months from the Initial or most recent Reassessment.

**\*\*\*See FAQ on differences between Discharge and Administrative Close and when to use**

MHP provider is to coordinate with SW\*. "Discharge" CANS and/or PSC-35 to be completed and entered into IRIS for planned discharges. "Administrative Close" CANS and/or PSC-35 to be completed and entered into IRIS when client is being closed due to no contact.\*\*\*