

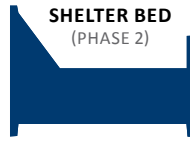
WHOLE PERSON CARE



What is It?

Whole Person Care (WPC) is the coordination of physical, behavioral health, and social services in a patient centered approach with the goals of improved health and well-being through more efficient and effective uses for Medi-Cal beneficiaries struggling with homelessness.

When a WPC beneficiary enters an Orange County, CA...

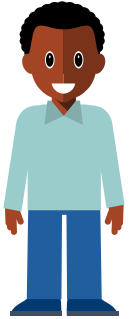


OR
Is referred through the OC Health Care Agency



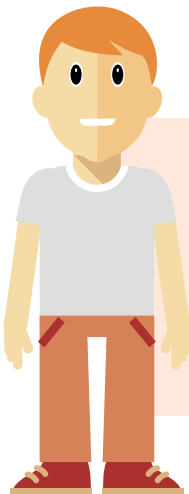
CHAT-H
Public Health Services Nurse

Behavioral Health Services (BHS) Outreach and Engagement
(or other BHS program)



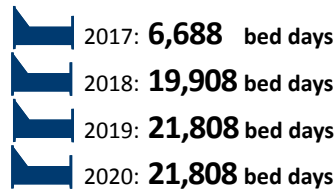
WPC Connect

Electronic system is notified and the beneficiary's care plan is created. The system has the capacity to share data across multiple providers.



Beneficiary is connected to wrap-around, applicable programs and services that may include:

1 Recuperative Care (24/7/365)



70,212 Total
bed days through year 2020

2



One-on-One CalOptima personal care coordinator

3



Coordinated Entry
into permanent supportive housing

4



Linkage to mental health and/or substance use disorder treatment

5

Community Referral Network

