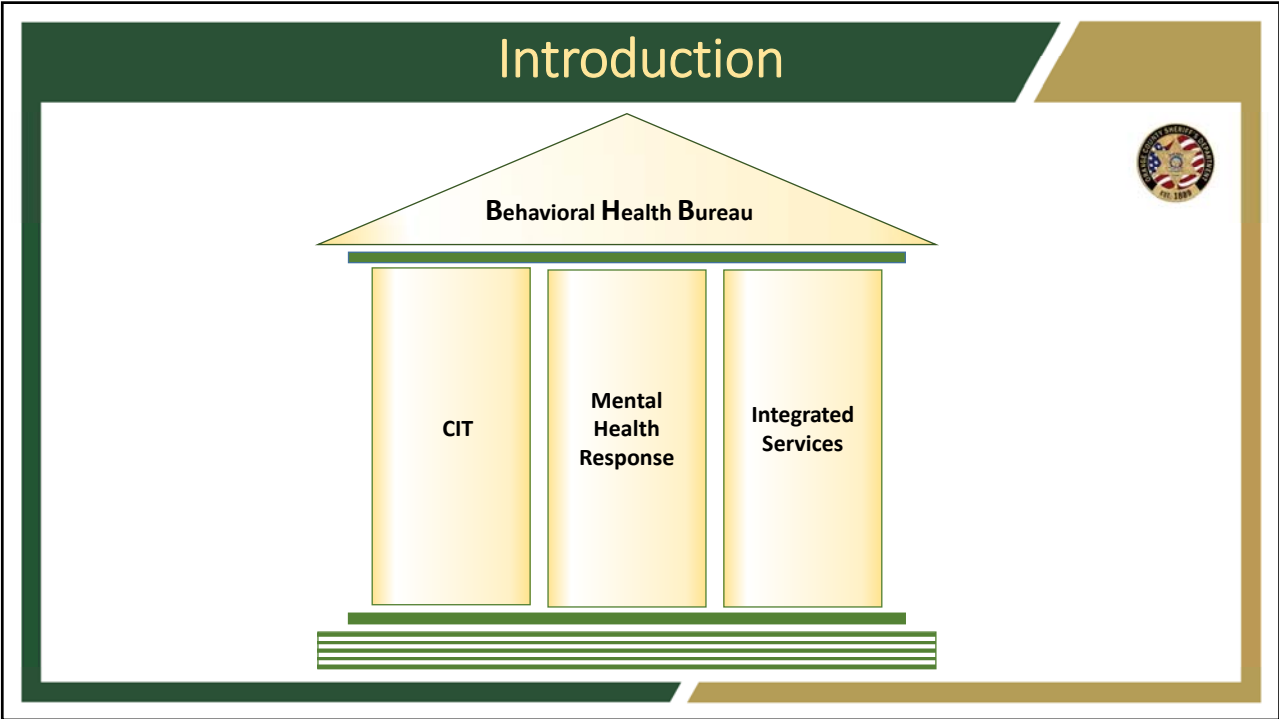





1



2


CIT



- CIT**
 - 100% of Sworn staff will receive 16 hours of training
- Advanced CIT**
 - 25% of Sworn staff will receive 40 hours of training

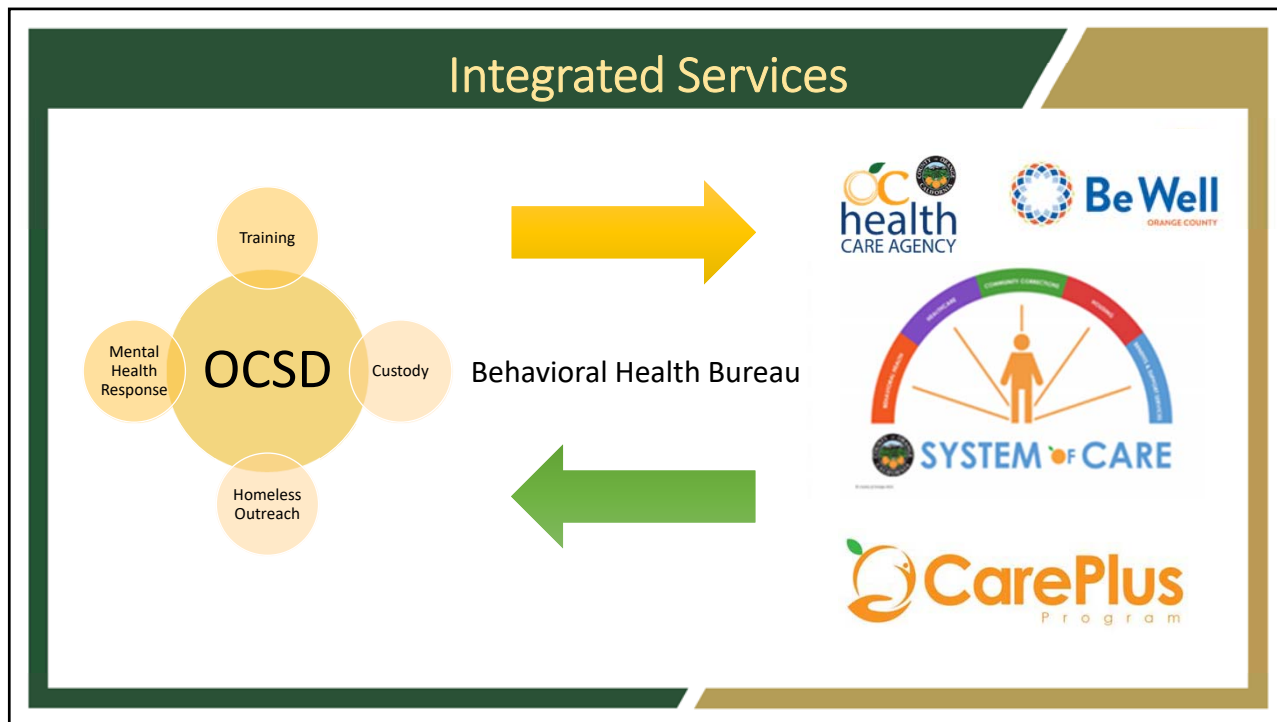
3

Mental Health Response




- HLO**
 - Redefinition of Roles and Responsibilities
 - Deployment Model
- PERT**
 - Overhaul OCSD's PERT model
 - Incorporate case management
 - Expansion into other OCSD patrol areas
- Analytics**
 - Evaluation of calls for referral into case management
 - Analyze quantity and quality of calls as well as their outcomes

4



5

- ### Goal / Objectives
- Measure performance and conduct program evaluation
 - Create a professional, collaborative, and appropriate response to mental health calls for service
- 

6